

FCLW CLOSER

Containers: The FCLW model closer is constructed to close friction top cans with lid diameter to 35 cm (14") and height to 35 cm (14"). It is also able to close many plastic containers with press on lids. It cannot close plastic pails of 90 or 100 mil thickness (See the RPC model).

Speed: The conveyor moves at a rate of approximately 6.5 m/min (25 ft./min.) and will accept randomly placed containers. Standard 4 liter (1 gallon) cans will close at approximately 30/min. maximum speed.

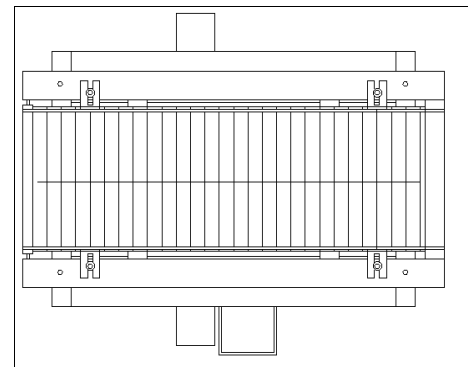
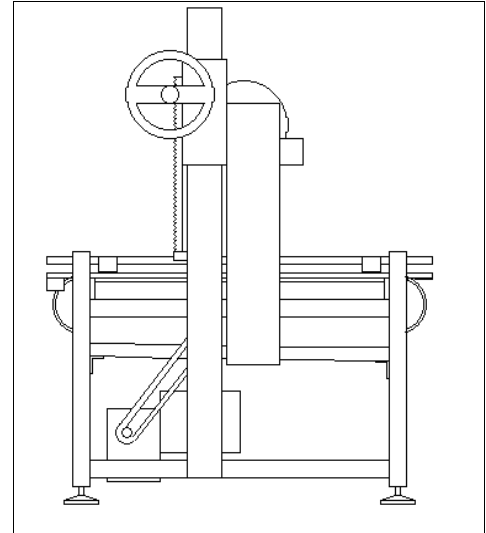
Operation: The container enters the machine with the lid placed on top. The motorized table top conveyor moves the container through the machine. As the containers move below the large roller, the lids are pressed on.

Installation: The machine is shipped assembled and is capable of being installed easily by your plant personnel. The machine needs only be connected to your plant electric source. The motor which operates the machine is available in most 50 and 60 hz configurations.

Change of Container: If the container height is changed, the the height is adjusted by a rack and gear system with hand wheel. The platform guides are adjusted to center the container opening below the rollers.

Maintenance: The machine is designed to provide the user with long service and minimal maintenance. The standard frame is a tough welded steel with a polyurethane coating. Key parts are stainless steel to resist wear and corrosion. The machine is supplied with an illustrated installation/operation/maintenance manual.

Safety: The motor that operates the conveyor is Class 1, Group D, Explosion proof. The machine is intended to be operated without an operator.



**CRANDALL INTERNATIONAL, INC. <> 1109 Military Road
Buffalo, NY 14217 USA
Tel: 716-876-0402 <> Fax: 716-876-7137
Email: kcrandall@cipak.com <> Internet: http://www.cipak.com**

Noise Control: The A level is less than 20 db.

Utilities Required:

Electric: The fractional horsepower motor requires less than 5 amps at start, depending on motor electrics.

Pneumatic: None.

Personnel Required: No operator is required at the closer while operating. In many cases, the operator of the filler will place the lids on the containers so that one worker is operating both filler and closer.

Options

Casters: The machine may be equipped with casters to allow the machine to be easily moved. This will allow the machine to be used in several locations if the products are in different locations.

Cleanliness Options: For operations which require frequent cleaning, we offer: stainless steel frame construction, splash guards.

Conveyors: conveyors may be added to ease discharge of filled containers from the machine.

Approximate Operating Space: 1.3 m x 1.3 m (44" x 44").

Approximate Shipping Measurements: 1.5 m x 1.5 m x 1.9 m (50" x 50" x 70").

Approximate Shipping Weight: 500 kg (1100 lbs).